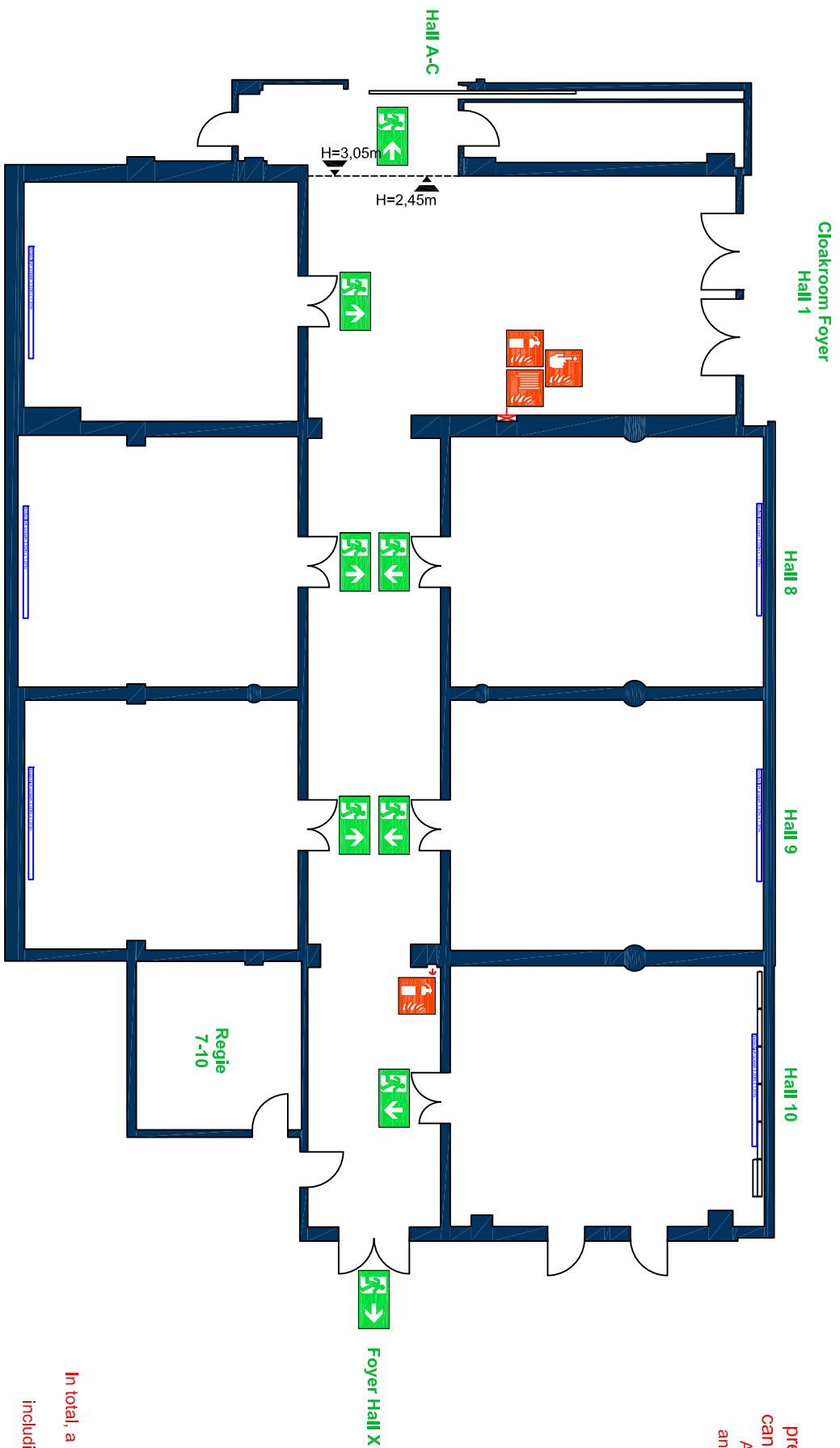








Please note that this is a preliminary floorplan only and can be subject to modifications ! All dimensions are approximate and should be verified on the spot.



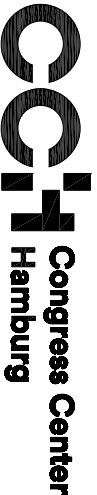
ATTENTION:
 In total, a maximum of 400 people may stay in the area of halls 5-10 including the foyer at the same time!

Hall 5-10 height
 Ceiling height S05-S07 3,00 m
 Ceiling height S08-S10 3,00 m
 Ceiling height Foyer 2,45 m
 Construction height (halls) 2,50 m

Floor Hall 5-10
 Flooring: Carpet
 Area loading 500 kg/sqm
 Point load

-  Keypoint area
-  Escape area
-  Special area:
 - only low fire load permitted
 - up to 10m² per stand
 - at least 2,50m space around every stand
-  Emergency exit
-  Fire extinguisher, fire alarms
-  fire hose, fire hydrant



First Floor	Event: Date:			
Hall 5-7	Floor space S05 = 69 m²	S06 = 75 m²	S07 = 73 m²	
Hall 8-10	Floor space S08 = 84 m²	S09 = 84 m²	S10 = 87 m²	
Foy. 5-10	Floor space = 236,00 m²			
		approved:	18.05.2021	
		scale:	1:200	
		paper size:	A4	
filename: S05-S10_Leer_EN_A4.pdf				