

Foyer Y height

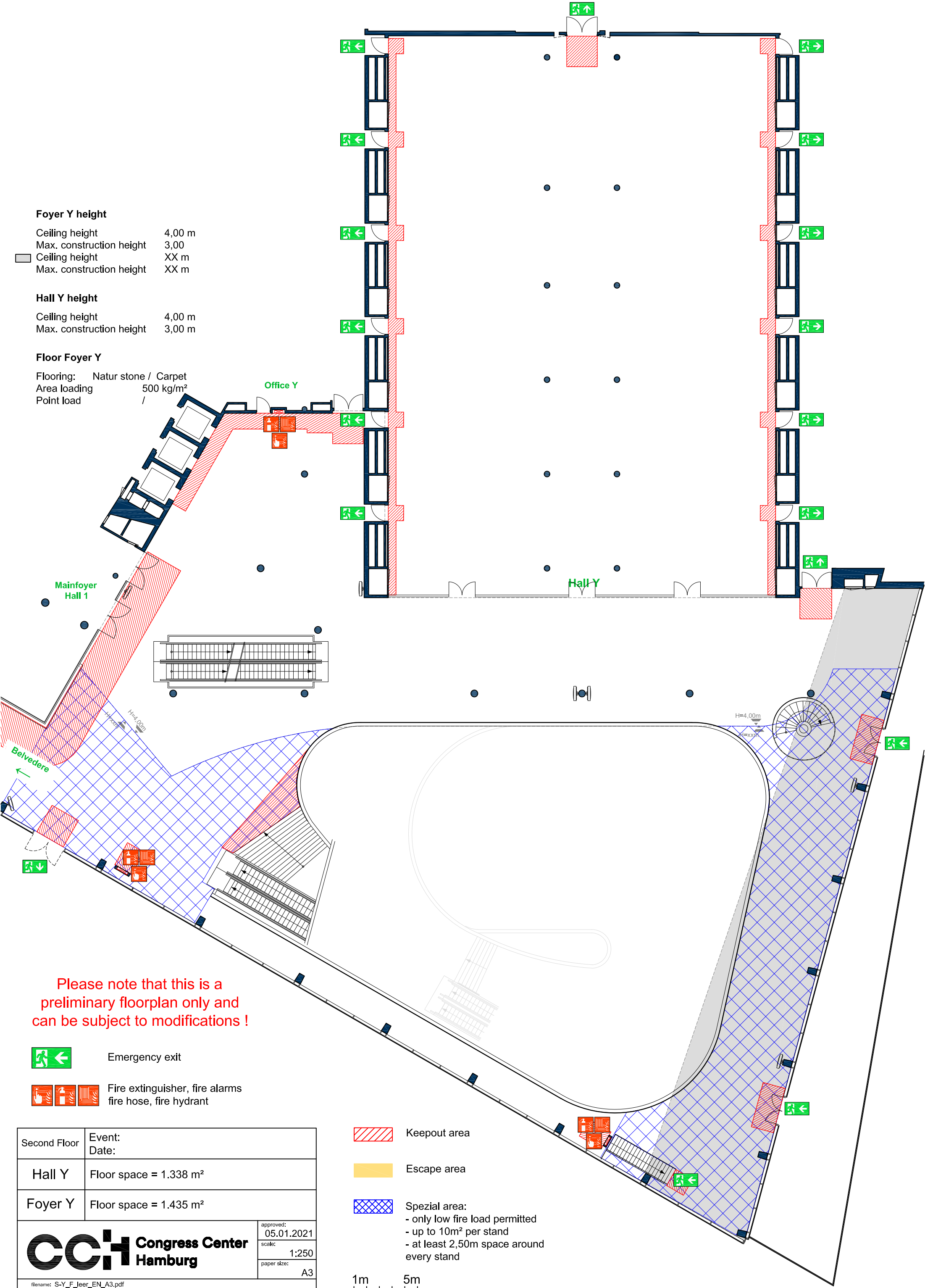
Ceiling height 4,00 m
 Max. construction height 3,00
 Ceiling height XX m
 Max. construction height XX m

Hall Y height



Ceiling height 4,00 m
 Max. construction height 3,00 m

Floor Foyer Y



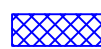
Flooring: Natur stone / Carpet
 Area loading 500 kg/m²
 Point load /



Please note that this is a preliminary floorplan only and can be subject to modifications !

-  Emergency exit
-  Fire extinguisher, fire alarms
fire hose, fire hydrant

Second Floor	Event: Date:
Hall Y	Floor space = 1.338 m ²
Foyer Y	Floor space = 1.435 m ²
	
approved: 05.01.2021 scale: 1:250 paper size: A3	
filename: S-Y_F_Jeer_EN_A3.pdf	

-  Keepout area
-  Escape area
-  Spezial area:
 - only low fire load permitted
 - up to 10m² per stand
 - at least 2,50m space around every stand

