

Please note that this is a preliminary floorplan only and can be subject to modifications ! All dimensions are approximate and should be verified on the spot.

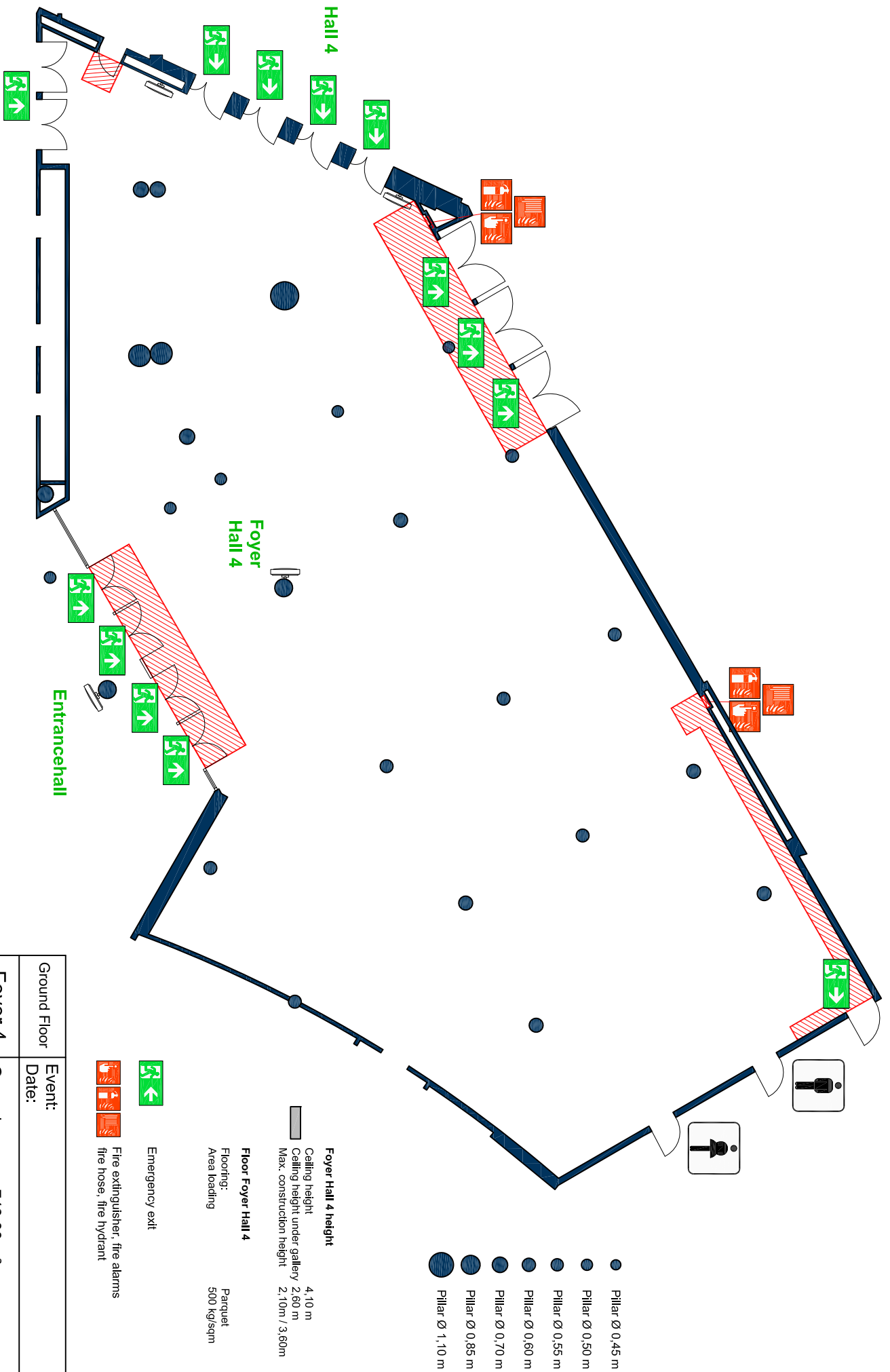
Foyer 3 + H

Keypoint area

Escape area

Special area:

- only low fire load permitted  
- up to 10m<sup>2</sup> per stand  
- at least 2,50m space around every stand



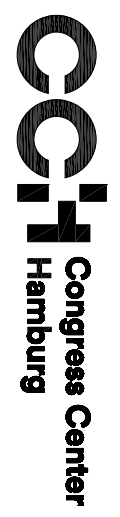
- Pillar Ø 0,45 m
- Pillar Ø 0,50 m
- Pillar Ø 0,55 m
- Pillar Ø 0,60 m
- Pillar Ø 0,70 m
- Pillar Ø 0,85 m
- Pillar Ø 1,10 m

**Foyer Hall 4 height**  
 Ceiling height 4,10 m  
 Ceiling height under gallery 2,60 m  
 Max. construction height 2,10m / 3,60m

**Floor Foyer Hall 4**  
 Flooring: Parquet  
 Area loading 500 kg/sqm

- ➡ Emergency exit
- 🔥 Fire extinguisher, fire alarms
- 🔥 fire hose, fire hydrant

Ground Floor	Event:
Foyer 4	Date:
Ground space = 743,00 m <sup>2</sup>	



approved: 26.07.2021  
 scale: 1:200  
 paper size: A4

filename: S04F\_leer\_EN\_A4.pdf