

## Hall D Factsheet

A splendid pair: Hall D's two wide banks of windows not only supply lots of daylight but also grant a fantastic view of Planten un Blomen Park.

**Ideal for specialist conventions and break-out sessions**

Building section	West
Floor	2nd floor
Gross area (m <sup>2</sup> )	266
Theater-style seating	230
Classroom-style seating	124
Clear height (m)	4.50
Divisible	No
Daylight	Yes
Exhibitions	Yes

### Key Facts

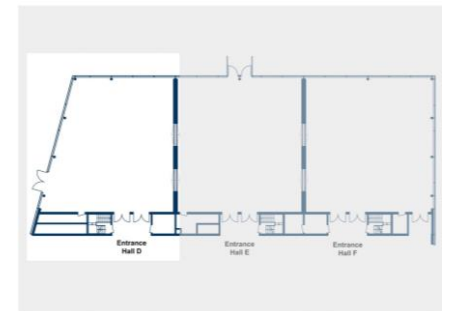
- **Seating type:**  
Mobile seating
- **Ceiling height:**  
4.50 m
- **Flooring:**  
Carpeting
- **Daylight details:**  
Hall may be blacked out
- **Foyer:**  
Foyer D-G
- **Cloakroom:**  
Permanent cloakroom with approx.  
320 hooks in Foyer D-G

### Other services

- **Exhibition use:**
  - Exhibition area\*:  
98 m<sup>2</sup> net
  - Floor load:  
500 kg/m<sup>2</sup>
  - Point load:  
300 kg
- **Audio\*\*:**
  - Ceiling-mounted loudspeakers for voice transmission
  - Mobile audio control station with digital mixing console
  - Wired and wireless microphones
  - Input of any pre-recorded audio file format
  - Permanently-installed cabling infrastructure
- **Video\*\*:**
  - DLP projector with 8500 ANSI Lumen
  - Motor-operated 4 m x 3 m roller screen system
- **Lightening\*\*:**
  - 3-phase busbar system for light fixtures

### Floorplan

#### Hall D floorplan:



**All information is subject to change.**

- \* Depending on specific usage.
- \*\* Use of audio, video and other technical equipment not included in hall rental fee. We will gladly put together an individual proposal.