

Foyer X Factsheet

Located directly next to Hall 4, this foyer provides a perfect setting for coffee breaks, small exhibitions or a welcome reception. For large-scale events, Foyer 4 can be converted into a cloakroom.

Building section	East
Floor	1st floor
Gross area (m ²)	1,290
Clear height (m)	2.90 – 4.00
Divisible	No
Daylight	Yes
Exhibitions	Yes

Key Facts

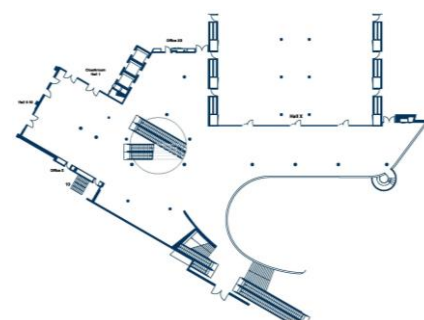
- **Ceiling height:**
2.90 m - 4.00 m
- **Flooring:**
Carpeting
- **Cloakroom:**
Permanent cloakroom with approx. 840 hooks

Other services

- **Exhibition use:**
 - Exhibition area*:
max. 476 m² net
 - Floor load:
500 kg/m²
- **Audio**:**
 - Ceiling-mounted loudspeakers for announcements and voice transmission
- **Video**:**
 - Digital signage system with individually-addressable monitors
- **Lighting**:**
 - 3-phase busbar system for light fixtures

Floorplan

Floorplan Foyer X:



All information is subject to change without notice.

- * Depending on specific usage.
- ** Use of audio, video and other technical equipment not included in hall rental fee. We will gladly put together an individual proposal.