

## Check-in 2 Factsheet

This space provides a beautiful ambience for you to greet your guests!  
 Our registration counter is located in the light-flooded CCH entrance hall.

Check-in 2 comprises a long registration counter and two back offices.  
 The counter can be subdivided into two segments using mobile partitions, and used for two different events at the same time. The mobile partitions allow either segment or the entire counter to be locked securely.

Building section	East
Floor	Ground f.
Gross area (m <sup>2</sup> )	103
Clear height (m)	3.10
Divisible	Yes
Daylight	Yes
Exhibitions	No

### Key Facts

#### ■ Seating :

- At counter: Counter-type chairs for up to 12 people
- Back office 021: Tables and chairs for up to 6 people
- Back office 022: Tables and chairs for up to 6 people

#### ■ Ceiling height:

- Counter: 3.10 m
- Back offices: 3.10 m

#### ■ Flooring:

- Counter: Natural stone floor
- Back offices: carpeting

#### ■ Divisibility details:

Check-in 2 features a long registration counter and two back offices. The two back offices may be connected using a double-wing door. A mobile partition is available to subdivide the counter and separate the two back offices, or to open only one portion for use.

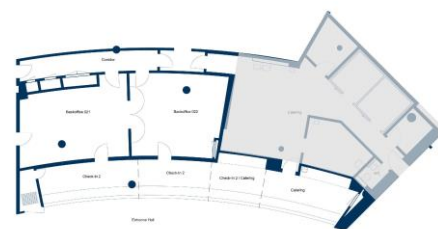
#### ■ Barrier-free access:

The counter connected to Back Office 021 features a barrier-free outer section for mobility-impaired individuals such as wheelchair users. It is accessible from both, the visitor and the staff side (refer to floorplan).

### Other services

### Floorplan

#### Check-in 2 floorplan:



All information is subject to change without notice.

- \* Depending on specific usage.
- \*\* Use of audio, video and other technical equipment not included in hall rental fee. We will gladly put together an individual proposal.