

ALSTER Lounge Factsheet

One of the really special places at the CCH: ALSTER Lounge is located on the third floor in the backstage area of Hall 1. It receives daylight, is generously spaced and features luxurious furnishings. After all, we want our VIP guests' stay at the CCH to be as pleasant as possible! The lounge provides direct access to the stage of Hall 1.

It is ideal for high-ranking government representatives, business and science VIPs and artists

Building section	Center
Floor	3rd floor
Gross area (m ²)	168
Clear height (m)	2.50
Divisible	No
Daylight	Yes
Exhibitions	No

Key Facts

■ Seating :

Meeting room with large conference table
Office room with a desk and a lounge suite

■ Ceiling height:

2.50 m

■ Flooring:

Carpeting

■ Divisibility details:

ALSTER Lounge consists of Meeting Room 316 and Office 317 with a separate bathroom and shower as well as a spacious corridor. A ladies' and a men's room as well as a pantry are accessible from the corridor.

A separate elevator connects ALSTER Lounge directly with the backstage area of Hall 1.

■ Cloakroom:

Dedicated cloakroom in the corridor

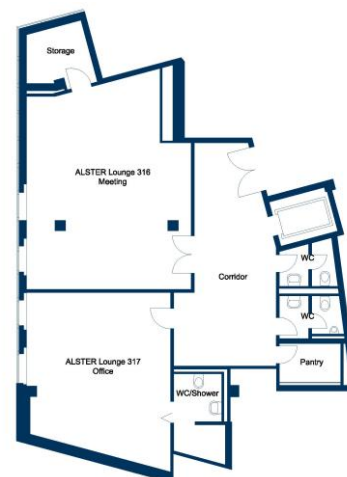
Other services

Technical equipment:

- 86" touch screen with a rolling base and a set-top box**

Floorplan

ALSTER Lounge floorplan:



All information is subject to change without notice.

- * Depending on specific usage.
- ** Use of additional audio, video and other technical equipment not included in hall rental fee. We will gladly put together an individual proposal.